



Marelich Mechanical

An EMCOR Company



Local Presence.

National Depth.



Marelich Mechanical

An EMCOR Company



With decades of experience Marelich's steady and reliable team will tell you more about how our expert solutions can help you meet today's demanding project needs...

We're here for you.

BUSINESS CARD

A Bay Area leader in mechanical and plumbing systems and services contracting

Marelich Mechanical, An EMCOR Company, has been the Bay Area's leading mechanical systems provider for almost 80 years. We've worked on nearly every type of facility in virtually every market because **we provide a unique combination of professional expertise, leading-edge technologies, and end-to-end mechanical solutions that extend from design/build through to expert installation.** This blend of expertise enables us to deliver high-quality projects to clients — consistently on time, within budget, and to their most exacting standards.



The EMCOR Advantage™: It's behind us. Marelich is a subsidiary of EMCOR Group, a leading provider of electrical and mechanical construction, facilities services, and energy infrastructure. EMCOR is a financially strong Fortune 500® company with unmatched bonding capabilities, an award-winning, industry-leading safety program, and a nationwide knowledge network of experts in virtually every market and type of facility. Add Marelich's full range of powerful capabilities, and you have the right solution for optimum system performance and maximum value.





Expert capabilities for timely, efficient project delivery

Marelich offers full lifecycle services to meet the increasing demands of today's constantly changing facilities environment. No matter how large the project or complex the challenge, our team of experts provides complete services, from innovative design/build and value engineering options, to leading-edge project delivery strategies, custom-made system components, and energy-efficient technologies. Whether your project involves HVAC or plumbing systems, central plants, wastewater treatment operations, or high-purity process systems, you get facilities that are built better, more efficient, and deliver greater value.

Transforming complex challenges into high-performance opportunities

Over the years, Marelich has become known for its ability to complete even the most complex and demanding projects, while satisfying clients' highest expectations. That's because our highly trained and skilled experts share our commitment to quality and complete customer satisfaction. Supported by extensive in-house capabilities, we consistently create effective solutions that deliver optimum performance, reliability, and cost savings.

Preconstruction and design/build services: The fast track to improved performance

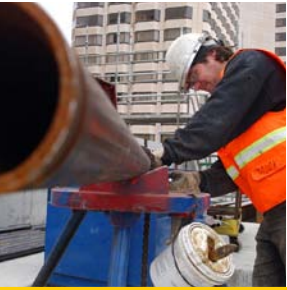
When you get Marelich involved in your project early, you get expert service and innovative ideas available from our design/build professionals and value engineering experts. By focusing on your objectives, we can help you find the right systems for your needs, while reducing project costs, enhancing constructability, and shortening your project's schedule.

BIM: Optimum constructability, maximum facilities management

Marelich has extensive BIM (building information modeling) expertise. And as part of EMCOR, we can access a nationwide knowledge network of over 300 other BIM EMCOR professionals. In fact, EMCOR companies are at the forefront of the BIM trend, acting as lead contractor on hundreds of its completed BIM projects.



To keep projects on track throughout their entire lifecycle, Marelich uses advanced conceptual estimating, financial management, project planning, and activity scheduling technologies.



Using this efficient project delivery strategy, we create computer-based, 3D models that let the whole project team “fly through” the building before ground is even broken, spotting potential collisions, exploring design alternatives, and performing other valuable activities.

And when we turn the building over to you, your building managers can use the BIM database of operational and maintenance information to maintain consistently optimum system performance. It’s a combination of features that ensures faster delivery of better built facilities and significantly more efficient ongoing management.

Custom Fabrication: A fit that’s right from the start

Marelich’s leading-edge piping, plumbing and sheet metal fabrication facilities in the Bay Area and Sacramento region manufactures a wide range of high-quality components designed to fit properly for smooth installation and long-lasting performance. And since we build in house, we deliver when its time to install, shortening project delivery cycles, and further helping to maintain maximum jobsite safety.

Energy management and environmental design: Solutions with long-term benefits

Marelich’s LEED (Leadership in Energy and Environmental Design)-accredited professionals and other energy experts can help you find ways to make your mechanical systems more efficient and socially responsible, while reducing energy consumption and providing other long-term benefits.

Our experts work with you to select the best solutions from a range of green and energy-saving options. They also provide complete green building construction services. And for retrofits and facilities already in operation, they can assess and perform startup and recommissioning procedures that immediately improve energy performance.



OUR SERVICES

Mechanical Services

- Clean Room
- Custom Duct Work
- Fabrication/Prefabrication
 - Piping & Sheet Metal
- Heating
- High Purity Systems
- Industrial & Process Piping
- Medical Gases
- Plumbing
- Single & Combined Cycle Cogeneration & Fuel Cell Installation

Additional Services:

- Commissioning & Start Up
- Component Pre-Fabrication
- Conceptual Estimating
- Design/Assist & Design/Build
- Fast-track
- Green Building Construction
- Scheduling & Planning
- System/Equipment Selection & Pre-Purchasing
- Value Engineering/ Pre-Construction Services



OUR MARKETS

Biotech/Healthcare

- Data Centers
- Hospitals/Clinics
- Laboratories/Clean Rooms
- Pharmaceutical/R&D

Commercial

- Malls/Shopping Centers/Retail
- Multi-Unit Residential
- Multi-Use Facilities
- Office Buildings/Real Estate
- Parking Garages
- Professional Services

Education

- Libraries/Universities
- Arenas/Stadiums/Auditoriums

Entertainment/Hospitality

- Arenas/Stadiums/Museums
- Cinemas/Theater
- Conference/Convention Centers
- Hotels/Resorts/Casinos
- TV/Radio/Media

Financial Services

- Data Centers

Manufacturing/Industrial

- Power Generation/Transmission/ Cogeneration
- Water/wastewater

Public/Government

- Corrections
- Emergency Centers
- Military
- Utilities

Technology

- Call Centers/Data Centers
- Clean Rooms/Laboratories
- Telecommunication
- Research & Development
- Semi-Conductor

Transportation

- Airports



Safety and quality that set us apart



ADVANTAGES

- Over 70 years of industry experience
- Access to EMCOR's knowledge network of more than 70 companies with over 140 locations
- State-of-the-art automated sheet metal fabrication facility
- State-of-the-art plumbing & piping fabrication facility
- “Clean room” pre-fabrication
- ISO certified company
- Computerized estimating capabilities
- In-house professional mechanical engineers
- Leadership in Energy & Environmental Design (LEED) accredited professional staff
- ASME Code Stamps:
 - A (Boiler Assembly)
 - PP (Power Piping Fabrication at Shop & Field Locations)
 - U (Unfired Pressure Vessel Fabrication)
 - R (Repairs to Boilers, Power Piping & Pressure Vessels)
- State-of-the-art 3D CAD technology

A Passion for Safety and Quality

Like all EMCOR companies, Marelich is passionate about safety and quality. EMCOR's **Be There for Life ZERO Accident Program (ZAP)** combined with our “Quality with Safety” process has helped us achieve safety performance that's 5-to-10 times better than the national average. Furthermore, since 2002, EMCOR companies have reduced their total recordable incident rate (TRIR) by 46%, leading CNA Insurance Company to recognize us for our safety program design and high level of safety performance.

In addition, Marelich has received the prestigious **ISO 9001 certification**, an international quality standard that emphasizes customer focus and a preventive approach to operations management. Our quality control program is an ongoing process of quality evaluation and verification designed to maintain strict control over all construction methods and procedures. By managing every phase of the construction process, we ensure that every project is delivered to consistently high-quality standards.



What can Marelich do for you?

Marelich Mechanical provides complete solutions for all your mechanical contracting requirements. By focusing on your critical success factors, we deliver the systems and services you need to promote growth and increase value in today's demanding environment.

Call 510.785.5500 or Visit www.marelich.com

Marelich Mechanical Co., Inc.

OUR MISSION:

To be every client's first choice for exceptional mechanical contracting services.

Our Commitment

- Partner with our clients to build long-term relationships based on honesty, fairness, and respect
- Perform superior quality work safely, on time, and within budget
- Offer our clients a complete array of mechanical services that address their facility's full life-cycle needs
- Provide continuous improvement of our performance by consistently developing and utilizing expert skills and adopting the most effective technologies

OUR COMMUNITY:

Taking KidSafety to the Streets™

As part of EMCOR's *Taking KidSafety to the Streets* Program, **Marelich is proud to serve the community through its work with the National Center for Missing & Exploited Children.** By prominently displaying missing children's posters on our company and personal vehicles, and by responding quickly when a child is reported missing within facilities where we work, we help recover missing children and promote child safety.

The ACE Mentor Program

Marelich Mechanical is actively involved with the ACE (Architecture, Construction, Engineering) Mentor Program. **By engaging high-school students in activities related to the design/build construction industries, we enlighten them about opportunities and excite them about pursuing careers in the building professions.** It's an effort that contributes to local communities and their educational programs, gives thousands of young people a clearer sense of direction for their lives, and provides a continuous stream of new talent for our industry.



Build. Power. Service. Protect.

To learn more about EMCOR companies:

Call 866-890-7794 *US & Canada*
0845 600 2300 *UK*

Visit www.emcorgroup.com

Email emcor_info@emcor.net



Marelich Mechanical

An EMCOR Company

Marelich Mechanical Co., Inc.

Headquarters:

24041 Amador Street
Hayward, CA 94544-1201

T 510.785.5500

F 510.783.7711 (*Estimating*)

www.marelich.com

Sacramento Office:

8670 Younger Creek Drive
Suite 100

Sacramento, CA 95828-1022

T 916.388.5300

F 916.388.5310

